

# Be a **LUB**Expert<sup>®</sup>

## Grease Bearings Right



Available  
with  
**Dynamic  
Analysis**

# LUBExpert®

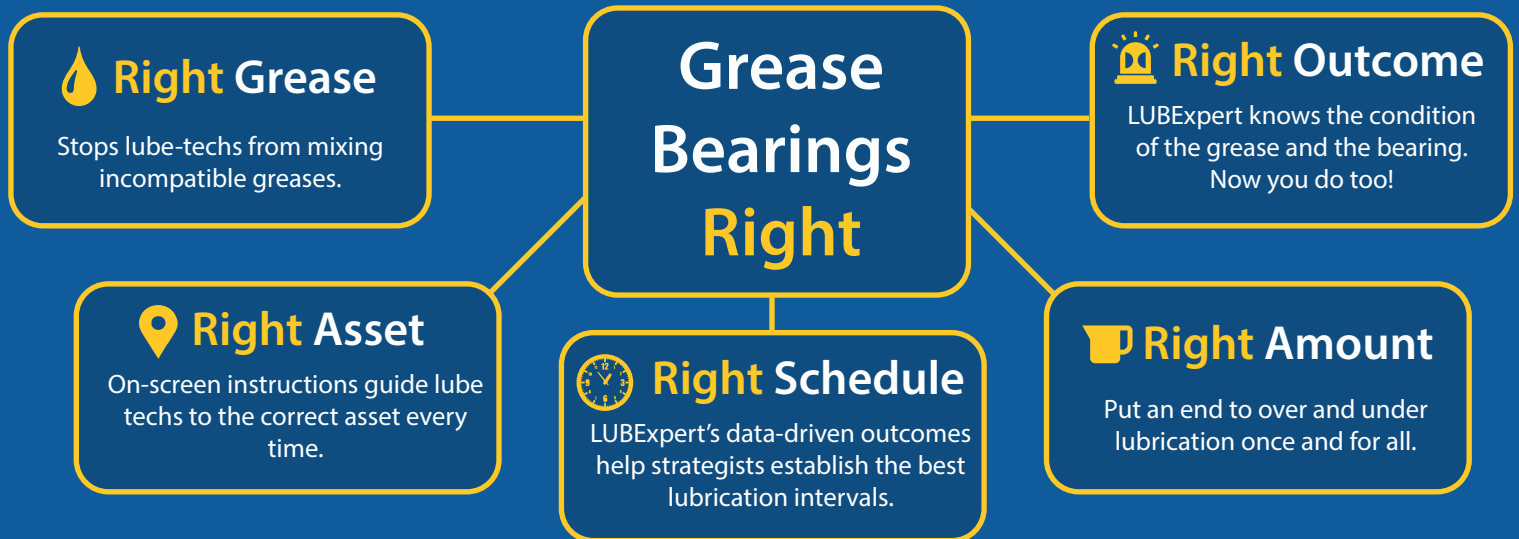
A complete ultrasound solution to manage your acoustic lubrication and condition monitoring program

## LUBExpert tells us when to grease... and when to stop.

Grease reduces friction in bearings. Less friction means longer life. LUBExpert alerts you when friction levels increase, guides you during re-lubrication, and prevents over and under lubrication.

## LUBExpert Dynamic connects the Lube Team with the ConMon Team.

LUBExpert Dynamic delivers advanced analysis of bearing condition. During grease replenishment, dynamic data is captured in the background. These outcomes are fed to the condition monitoring team to help assess real-time bearing condition.



## LUBExpert Features



### Bearing Database

LUBExpert maintains a database of all your assets including bearing type and dimensions.



### Guided & Free Modes

Lube techs can choose between "FREE" and "GUIDED" modes to grease bearings right.



### Shopping List

LUBExpert reminds you to bring the right grease type, gun, and quantity for the day's lube tasks.



### Automation

LUBExpert removes the guesswork by automatically calculating the stabilization time between grease pumps.



### Work Orders

The workflow inherent in LUBExpert restores order and discipline to your lubrication program.



### System Messaging

LUBExpert uses messaging to document each decision made by the lube-tech. I.E. "safety risk", "asset not in operation".



### LUBExpert Dynamic

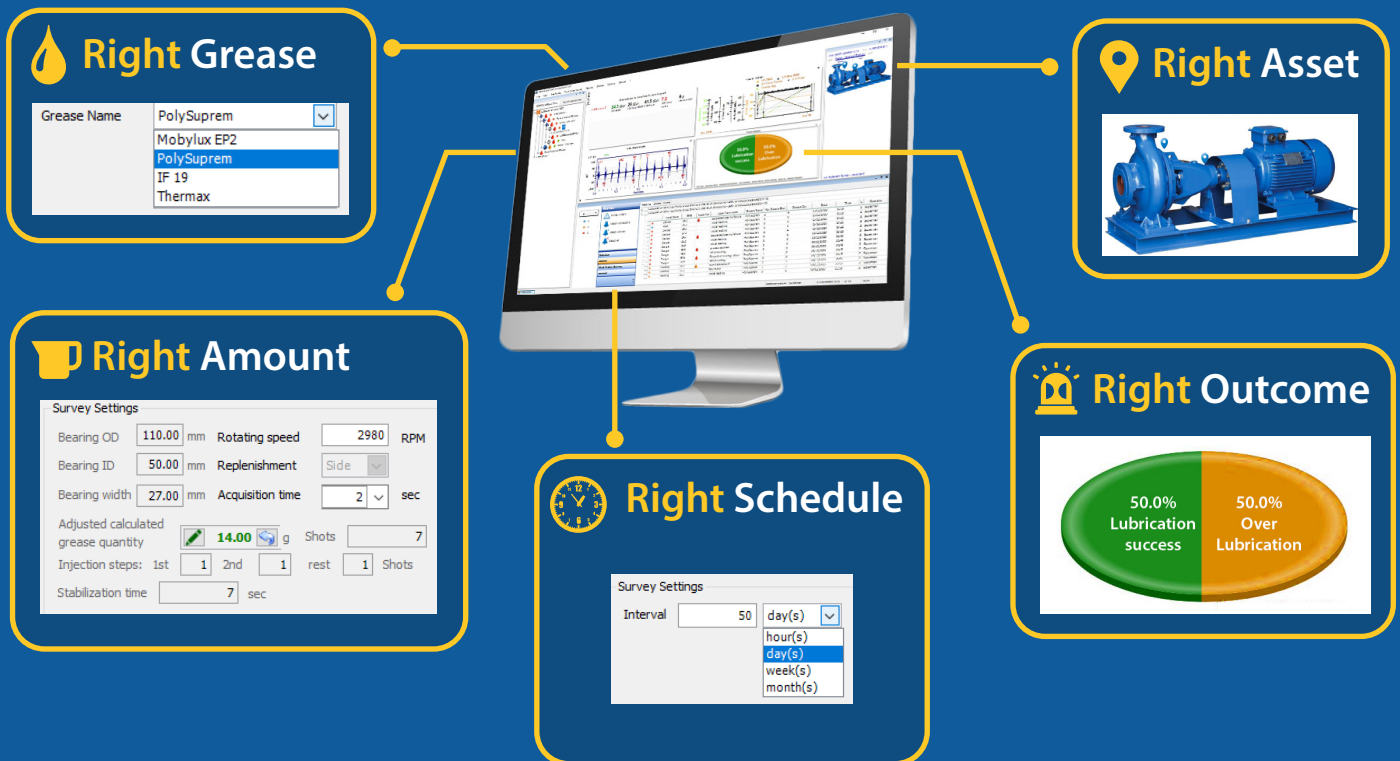
With the **Dynamic Option**, you'll reduce data collection time while increasing the efficiency and communication between the lube and condition monitoring teams.

# Ultranalysis<sup>®</sup> Suite 3

Manage, trend, and analyze your ultrasound data.

- Create hundreds of databases and surveys
- Track grease types and grease consumption
- Precise diagnosis with SDT's 4 Condition Indicators
- Sort assets by status: lubrication success/failure, over greased, shorten interval, suspected bearing failure, ...

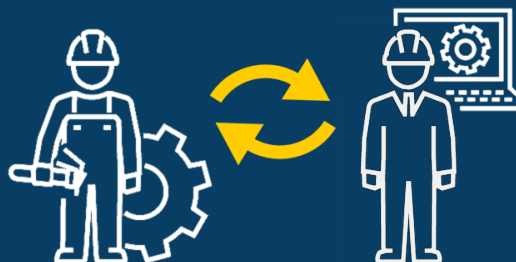
During any lube task, the **Dynamic Option** collects analytics in the background, thereby providing asset condition data to both the lube and condition monitoring teams. This is a win for communications, efficiency and overall reliability.



## Break Down the Silos

Dynamic data collected by LUBExpert is displayed in UAS3 in the Time and Frequency domain.

This dual reliability benefit saves time while removing information silos.



The lubrication team can now collect dynamic data for the condition monitoring team.

Asset condition information is now transparent across departments.

The **Dynamic Option** completely removes the information gap between lubrication and condition monitoring teams. By having the Lube Team collect and (if necessary) monitor Dynamic data, it becomes an integral member of the Condition Monitoring Team.

# LUBExpert Kit



- LUBExpert Standard Device
- Universal Battery Charger
- Ultranalysis Suite 3 (UAS3) Master
- Headphone, Neckband
- Shoulder Strap and Leather Belt Holder w/ Clip
- USB Cable
- SDT USB Memory Drive
- LUBExpert Custom Carrying Case
- LUBEsense1 Contact Sensor w/ Cable and Magnetic Bases
- LUBEAdaptor
- Grease Gun Mounting Cradle

## LUBExpert Specifications

General		Temperature Measurement	
External Sensor(s)	SDT LUBEsense1 only	Measuring Range	-70 to +380°C / -94 to +716°F
Internal Sensor(s)	Infrared Temperature	Accuracy (0 to 50°C / 32 to 122°F)	± 0.5 °C / ± 32.9 °F
Software Compatibility	Ultranalysis Suite 2 Ultranalysis Suite 3	Field of View (attenuation of 50%)	10°
System		Data Collector	
Operating System	Linux	Memory Capacity	More than 10,000 data distributed over more than 10,000 measurement locations
CPU	ARM9	Mechanical Characteristics	
Data memory	256 Mb	Display	Graphic Backlit LCD (128 x 64)
Signal Processing		Housing	Extruded Aluminum, Shockproof Rubber Protection
Dynamic range	109 dB	Dimensions	226 x 90 x 40 mm / 8.90 x 3.54 x 1.57 in (L x W x H)
Resolution	16 bits	Weight	830 g / 29.3 oz
Sampling rate	256 kHz	Operating and Storage Temperature	-15 °C to +60 °C / 14 °F to 140 °F
Response time	<10 ms	IP rating	IP 40
Ultrasound Measurement		Power	
Measuring Range	-15 to 120 dBμV	Battery	Rechargeable NiMH battery.
Resolution	0.1 dBμV	Nominal Capacity	4.4 Ah
Signal to Noise Ratio	-6 dB	Autonomy	+8 Hours
Bandwidth	36.1 to 40.4 kHz	Recharge Time	6 Hours
Condition Indicators	RMS, maxRMS, Peak, Crest Factor	Battery Charger	110-230 VAC, 50/60 Hz
Heterodyne Sampling Rate	8000 Samples/s (dynamic version)	Headphone	
		Noise Reduction Rating	25 dB

### Our Mission

SDT provides ultrasound solutions that help our customers gain a better understanding about the health of their factory. We help them predict failures, control energy costs, and improve product quality while contributing to the overall reliability of their assets.

Your SDT Certified Partner

**Precise Reliability**  
**75 Clairedan Dr., Suite A**  
**Powell, OH 43065**  
**614-376-4078**  
[www.precisereliability.com](http://www.precisereliability.com)  
[info@precisereliability.com](mailto:info@precisereliability.com)



**Ultrasound Solutions**

**SDT International s.a./n.v.**

Bd de l'Humanité,415  
 B-1190 Brussels - Belgium  
 Tél: +32(0)2-332 32 25  
 Email: [info@sdtultrasound.com](mailto:info@sdtultrasound.com)

**SDT North America**

7677 County Road 2, Cobourg,  
 ON K9A 4R5 Canada  
 Toll Free NA: 1-800-667-5325  
 Intl Phone: 1-905-377-1313  
 Email: [hearmore@sdtultrasound.com](mailto:hearmore@sdtultrasound.com)

[www.sdtultrasound.com](http://www.sdtultrasound.com)